

LUGGAGE // TROLLEY CASE DUFFFL BAG FLIGHT BAG

C·Y LUGGAGE



**GABBIANO LUGGAGE INC.**

32-20 MILLER STREET  
FLUSHING NY 11354  
TEL: 718-353-5160  
FAX: 718-353-5325

**ALL AROUND IMPORT**

1130 E.CYPRESS STREET  
COVINA CA 91724  
TEL: 626-339-8800  
FAX: 626-339-8957

**MALETA IMPORT INC.**

6928 NW 12TH STREET  
MIAMI FL 33126  
TEL: 305-592-2410  
FAX: 305-592-1179

**PI HSUAN FANG INTERNATIONAL LTD.**

NO277,CHENGGONG RD,CHANGHUA CITY,  
CHANHUA COUNTU 50045,TAIWAN(R.O.C)  
TEL: 8864-7268828  
FAX: 8864-7262188

C·Y LUGGAGE

2015  
CATALOG



**GA1010**

External Dimensions(Inch) :	21"	25"	29"
Weight(LB) :	7.05	8.9	11.00
Capacity (CU.IN.) :	3200	4900	7400



Purple      Blue      Dark Grey      Black

- Features :**
- 100% POLYCARBONATE
  - BUILD-IN TSA COMBINATION LOCK
  - FULLY LINED INTERIOR WITH LINING ZIPPERED DIVIDERS
  - COMFORTABLE SOFT RUBBERIZED CARRY HANDLE
  - 8 WHEELS SPINNER ASSURE EFFORTLESS
  - MULTI-DIRECTIONAL MOBILITY

**GA1020**

External Dimensions(Inch) :	21"	25"	29"
Weight(LB) :	7.00	8.70	11.00
Capacity (CU.IN.) :	3240	5100	7450



Purple      Yellow      Golden      Black

- Features :**
- 100% POLYCARBONATE
  - BUILD-IN TSA COMBINATION LOCK
  - FULLY LINED INTERIOR WITH LINING ZIPPERED DIVIDERS
  - COMFORTABLE SOFT RUBBERIZED CARRY HANDLE
  - 8 WHEELS SPINNER ASSURE EFFORTLESS
  - MULTI-DIRECTIONAL MOBILITY



**GA1030**

External Dimensions(Inch) :	21"	25"	29"
Weight(LB) :	7.10	8.90	11.10
Capacity (CU.IN.) :	3200	4900	7400



- Features :**
- 100% POLYCARBONATE
  - BUILD-IN TSA COMBINATION LOCK
  - FULLY LINED INTERIOR WITH LINING
  - ZIPPERED DIVIDERS
  - COMFORTABLE SOFT RUBBERIZED CARRY HANDLE
  - 8 WHEELS SPINNER ASSURE EFFORTLESS MULTI-DIRECTIONAL MOBILITY



**GA1040**

External Dimensions(Inch) :	21"	25"	29"
Weight(LB) :	7.4	8.90	11.10
Capacity (CU.IN.) :	3600	5800	8600

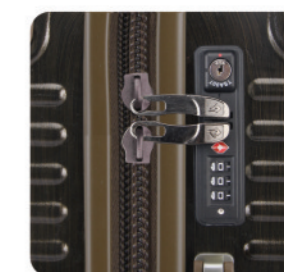


- Features :**
- 100% POLYCARBONATE
  - BUILD-IN TSA COMBINATION LOCK
  - FULLY LINED INTERIOR WITH LINING
  - ZIPPERED DIVIDERS
  - COMFORTABLE SOFT RUBBERIZED CARRY HANDLE
  - 8 WHEELS SPINNER ASSURE EFFORTLESS MULTI-DIRECTIONAL MOBILITY

•G•A•B•B•I•A•N•O•®



•G•A•B•B•I•A•N•O•®



## GA1050

External Dimensions(Inch) : 21"  
Weight(LB) : 7.10  
Capacity (CU.IN.) : 3200

25"  
8.90  
4900

29"  
11.20  
7400



Black/White      Black      Coffee      Red

### Features :

- 100% POLYCARBONATE
- BUILD-IN TSA COMBINATION LOCK
- FULLY LINED INTERIOR WITH LINING
- ZIPPERED DIVIDERS
- COMFORTABLE SOFT RUBBERIZED CARRY HANDLE
- 8 WHEELS SPINNER ASSURE EFFORTLESS
- MULTI-DIRECTIONAL MOBILITY

## GA1060

External Dimensions(Inch) : 21"  
Weight(LB) : 7.10  
Capacity (CU.IN.) : 3600

25"  
9.10  
5800

29"  
11.20  
8600



Bronze      Burgundy      Black

### Features :

- 100% POLYCARBONATE
- BUILD-IN TSA COMBINATION LOCK
- FULLY LINED INTERIOR WITH LINING
- ZIPPERED DIVIDERS
- COMFORTABLE SOFT RUBBERIZED CARRY HANDLE
- 8 WHEELS SPINNER ASSURE EFFORTLESS
- MULTI-DIRECTIONAL MOBILITY



**GA1070**

External Dimensions(Inch) :	21"	25"	29"
Weight(LB) :	7.3	9.2	11.30
Capacity (CU.IN.) :	3200	4900	7400



Yellow      Burgundy      Black      Blue

- Features :**
- 100% POLYCARBONATE
  - BUILD-IN TSA COMBINATION LOCK
  - FULLY LINED INTERIOR WITH LINING
  - ZIPPERED DIVIDERS
  - COMFORTABLE SOFT RUBBERIZED CARRY HANDLE
  - 8 WHEELS SPINNER ASSURE EFFORTLESS
  - MULTI-DIRECTIONAL MOBILITY

**GA1080**

External Dimensions(Inch) :	21"	25"	29"
Weight(LB) :	6.00	8.70	10.80
Capacity (CU.IN.) :	3100	4900	7400



Orange      City View      Gradient Grey      Gradient Blue

- Features :**
- 100% POLYCARBONATE
  - BUILD-IN TSA COMBINATION LOCK
  - FULLY LINED INTERIOR WITH LINING
  - ZIPPERED DIVIDERS
  - COMFORTABLE SOFT RUBBERIZED CARRY HANDLE
  - 8 WHEELS SPINNER ASSURE EFFORTLESS
  - MULTI-DIRECTIONAL MOBILITY

## TP2010

SIZE: 20"25"30"

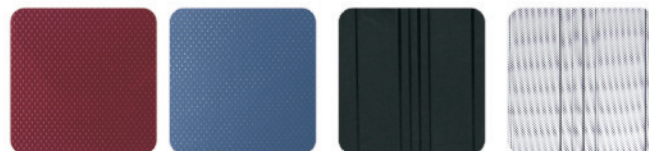
MULTIPLE INTERIOR COMPARTMENTS FOR PACKING EFFICIENCY  
FULL PRINTED LINING AND INTERIOR TIE-DOWN STRAPS  
FOR ADDED PROTECTION  
DURABLE AND LIGHTWEIGHT POLYCARBONATE COMPOSITE  
HARDSIDE CASES  
TOP AND SIDE CARRY HANDLE  
8 SPINNER WHEELS FOR 360D DEGREES OF MOBILITY

RED

BLUE

BLACK

SILVER



## TP2020

SIZE: 20"25"30"

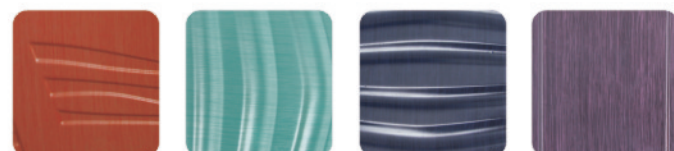
MULTIPLE INTERIOR COMPARTMENTS FOR PACKING EFFICIENCY  
FULL PRINTED LINING AND INTERIOR TIE-DOWN STRAPS  
FOR ADDED PROTECTION  
DURABLE AND LIGHTWEIGHT POLYCARBONATE COMPOSITE  
HARDSIDE CASES  
TOP AND SIDE CARRY HANDLE  
8 SPINNER WHEELS FOR 360D DEGREES OF MOBILITY

ORANGE

GREEN

NAVY

PURPLE



## TP2030

SIZE: 20"25"30"

MULTIPLE INTERIOR COMPARTMENTS FOR PACKING EFFICIENCY  
FULL PRINTED LINING AND INTERIOR TIE-DOWN STRAPS FOR  
ADDED PROTECTION  
DURABLE AND LIGHTWEIGHT POLYCARBONATE COMPOSITE HARDSIDE CASES  
TOP AND SIDE CARRY HANDLE  
8 SPINNER WHEELS FOR 360D DEGREES OF MOBILITY

GREEN

BLUE

PINK

BLACK



## TP2040

SIZE: 20"25"30"

MULTIPLE INTERIOR COMPARTMENTS FOR PACKING EFFICIENCY  
FULL PRINTED LINING AND INTERIOR TIE-DOWN STRAPS FOR ADDED  
PROTECTION  
DURABLE AND LIGHTWEIGHT POLYCARBONATE COMPOSITE  
HARDSIDE CASES  
TOP AND SIDE CARRY HANDLE  
8 SPINNER WHEELS FOR 360D DEGREES OF MOBILITY

TURQUOISE

YELLOW

GREEN



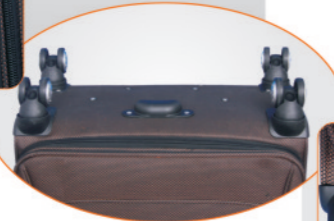
## GA3010

SIZE: 20"25"30"



CONSTRUCTED OF 840D NYLON FULL SATIN LINING  
EVA FOAMED FRONT FACE PANEL  
BUILD-IN TSA COMBINATION LOCK  
360D DEGREES ROTATING WHEELS  
SUPER LIGHTWEIGHT CONSTRUCTION WITH  
EXPANDING FEATURE ADDS EXTRA PACKING CAPACITY

PURPLE BLACK BLUE RED



## GA3040

SIZE: 20"25"30"

CONSTRUCTED OF 2400D POLYESTER FULL SATIN LINING  
EVA FOAMED FRONT FACE PANEL  
BUILD-IN TSA COMBINATION LOCK  
360D DEGREES ROTATING WHEELS  
SUPER LIGHTWEIGHT CONSTRUCTION WITH  
EXPANDING FEATURE ADDS EXTRA PACKING CAPACITY

BROWN BLACK BLUE PURPLE



## GA3060

SIZE: 20"25"30"



BLUE PURPLE RED BLACK



CONSTRUCTED OF 1680D NYLON FULL SATIN LINING  
EVA FOAMED FRONT FACE PANEL  
BUILD-IN TSA COMBINATION LOCK  
360D DEGREES ROTATING WHEELS  
SUPER LIGHTWEIGHT CONSTRUCTION WITH  
EXPANDING FEATURE ADDS EXTRA PACKING CAPACITY



## TP4010

SIZE: 20"26"30"

CONSTRUCTED OF 600D TWILL POLYESTER FULL SATIN LINING  
EVA FOAMED FRONT FACE PANEL  
360D DEGREES ROTATING WHEELS  
WITH PROTECTIVE WHEEL GUARDS  
SUPER LIGHTWEIGHT CONSTRUCTION WITH  
INTEGRATED HONEY COMB FRAME  
EXPANDING FEATURE ADDS EXTRA PACKING CAPACITY

ORANGE BLUE RED PURPLE





## TP4040

SIZE: 20"26"30"

CONSTRUCTED OF 600D TWILL POLYESTER FULL SATIN LINING  
EVA FOAMED FRONT FACE PANEL  
360D DEGREES ROTATING WHEELS  
WITH PROTECTIVE WHEEL GUARDS  
SUPER LIGHTWEIGHT CONSTRUCTION WITH  
INTEGRATED HONEY COMB FRAME  
EXPANDING FEATURE ADDS EXTRA PACKING CAPACITY



## TP4050

SIZE: 20"26"30"

CONSTRUCTED OF 600D TWILL POLYESTER FULL SATIN LINING  
EVA FOAMED FRONT FACE PANEL  
360D DEGREES ROTATING WHEELS  
WITH PROTECTIVE WHEEL GUARDS  
SUPER LIGHTWEIGHT CONSTRUCTION WITH  
INTEGRATED HONEY COMB FRAME  
EXPANDING FEATURE ADDS EXTRA PACKING CAPACITY



## GA5010

SIZE: 20"26"30"

CHAMP AGNE GREEN BROWN BLACK



CONSTRUCTED OF 900D SMALL GRID POLYESTER  
EVA FOAMED FRONT FACE PANEL  
360D DEGREES ROTATING WHEELS  
SUPER LIGHTWEIGHT CONSTRUCTION WITH  
INTEGRATED HONEY COMB FRAME  
EXPANDING FEATURE ADDS EXTRA PACKING CAPACITY



CONSTRUCTED OF 1200D POLYESTER FULL SATIN LINING  
EVA FOAMED FRONT FACE PANEL WITH COMPUTER EMBROIDERED LOGO  
360D DEGREES ROTATING WHEELS  
SUPER LIGHTWEIGHT CONSTRUCTION WITH  
INTEGRATED HONEY COMB FRAME  
EXPANDING FEATURE ADDS EXTRA PACKING CAPACITY

## GA5020

SIZE: 20"26"30"



## CS6220

SIZE: 20"24"28"32"



CONSTRUCTED OF 600D POLYESTER FULL LINING  
EVA FOAMED FRONT FACE PANEL  
INSIDE TROLLEY SYSTEM INTEGRATED HONEY COMB FRAME  
EXPANDING FEATURE ADDS EXTRA PACKING CAPACITY  
WHEELS WITH BEARING

BLACK/FUSCHIA BLACK/BLUE BLACK/RED BLACK/ORANGE BLACK/PURPLE



## CS6230

SIZE: 20"24"28"32"

CONSTRUCTED OF 600D POLYESTER FULL LINING  
EVA FOAMED FRONT FACE PANEL  
INSIDE TROLLEY SYSTEM INTEGRATED HONEY COMB FRAME  
EXPANDING FEATURE ADDS EXTRA PACKING CAPACITY  
WHEELS WITH BEARING

BLACK PURPLE BROWN



## CS6280

SIZE: 20"24"28"32"



CONSTRUCTED OF 1200D POLYESTER FULL LINING  
EVA FOAMED FRONT FACE PANEL  
INSIDE TROLLEY SYSTEM INTEGRATED HONEY COMB FRAME  
EXPANDING FEATURE ADDS EXTRA PACKING CAPACITY  
WHEELS WITH BEARING

BLACK/RED ALL BLACK BLACK/BLUE BLACK/GREY



## CS6610

SIZE: 20"24"28"32"



CONSTRUCTED OF 1200D POLYESTER FULL LINING  
EVA FOAMED FRONT FACE PANEL  
INSIDE TROLLEY SYSTEM INTEGRATED HONEY COMB FRAME  
EXPANDING FEATURE ADDS EXTRA PACKING CAPACITY  
WHEELS WITH BEARING

BLACK GREEN NAVY



CONSTRUCTED OF 1200D POLYESTER FULL LINING  
EVA FOAMED FRONT FACE PANEL  
INSIDE TROLLEY SYSTEM INTEGRATED HONEY COMB FRAME  
EXPANDING FEATURE ADDS EXTRA PACKING CAPACITY  
WHEELS WITH BEARING

## CS6620

SIZE: 20"24"28"32"



## CS6680

SIZE: 20"24"28"32"

CONSTRUCTED OF 600D TWILL POLYESTER FULL LINING  
EVA FOAMED FRONT FACE PANEL  
INSIDE TROLLEY SYSTEM INTEGRATED HONEY COMB FRAME  
EXPANDING FEATURE ADDS EXTRA PACKING CAPACITY  
WHEELS WITH BEARING



## CS6670

SIZE: 20"24"28"32"

CONSTRUCTED OF 600D TWILL POLYESTER FULL LINING  
EVA FOAMED FRONT FACE PANEL  
INSIDE TROLLEY SYSTEM INTEGRATED HONEY COMB FRAME  
EXPANDING FEATURE ADDS EXTRA PACKING CAPACITY  
WHEELS WITH BEARING



## CS6690

SIZE: 20"24"28"32"

CONSTRUCTED OF 600D POLYESTER FULL LINING  
EVA FOAMED FRONT FACE PANEL  
INSIDE TROLLEY SYSTEM INTEGRATED HONEY COMB FRAME  
EXPANDING FEATURE ADDS EXTRA PACKING CAPACITY  
WHEELS WITH BEARING



BLACK/CHECKER BROWN/CHECKER BROWN/FLOWER GREEN/CHECKER



CS7010

SIZE: 20"24"28"32"

CONSTRUCTED OF 600D PRINT POLYESTER FULL LINING  
EVA FOAMED FRONT FACE PANEL  
INSIDE TROLLEY SYSTEM INTEGRATED HONEY COMB FRAME  
EXPANDING FEATURE ADDS EXTRA PACKING CAPACITY  
WHEELS WITH BEARING



PURPLE

GREY



CS7060

SIZE: 20"24"28"32"



CS7060

SIZE: 20"24"28"32"

CONSTRUCTED OF 600D PRINT POLYESTER FULL LINING  
EVA FOAMED FRONT FACE PANEL  
INSIDE TROLLEY SYSTEM INTEGRATED HONEY COMB FRAME  
EXPANDING FEATURE ADDS EXTRA PACKING CAPACITY  
WHEELS WITH BEARING

CONSTRUCTED OF 600D PRINT POLYESTER FULL LINING  
EVA FOAMED FRONT FACE PANEL  
INSIDE TROLLEY SYSTEM INTEGRATED HONEY COMB FRAME  
EXPANDING FEATURE ADDS EXTRA PACKING CAPACITY  
WHEELS WITH BEARING

BLACK

GREEN

BROWN

RED



CS7050

SIZE: 20"24"28"32"



PINK

BLUE

FUSCHIA

NAVY





## CS7070

SIZE: 20"24"28"32"



CONSTRUCTED OF 600D PRINT POLYESTER FULL LINING  
EVA FOAMED FRONT FACE PANEL  
INSIDE TROLLEY SYSTEM INTEGRATED HONEY COMB FRAME  
EXPANDING FEATURE ADDS EXTRA PACKING CAPACITY  
WHEELS WITH BEARING

## CS7080

SIZE: 20"24"28"32"

CONSTRUCTED OF 600D PRINT POLYESTER FULL LINING  
EVA FOAMED FRONT FACE PANEL  
INSIDE TROLLEY SYSTEM INTEGRATED HONEY COMB FRAME  
EXPANDING FEATURE ADDS EXTRA PACKING CAPACITY  
WHEELS WITH BEARING

LEOPARD GREY LEOPARD WHITE LEOPARD PINK ZEBRA



## DUFFEL BAG/FLIGHT BAG

## TP33

SIZE: 20"23"26"29"

COLOR: BLACK

CONSTRUCTED OF 900D POLYESTER  
FRONT EVA POCKET  
PUSH BUTTON INTERNAL RETRACTABLE  
RECTANGULAR HANDLE SYSTEM



## TP77

SIZE: 20"23"26"29"

COLOR: BLACK BLUE KHAKI

CONSTRUCTED OF 600D TWILL POLYESTER FULL SATIN LINING  
FRONT EVA POCKET  
PUSH BUTTON INTERNAL RETRACTABLE  
RECTANGULAR HANDLE SYSTEM



## DUFFEL BAG/FLIGHT BAG

### TP88

SIZE: 20"23"26"29"

COLOR: BLACK GREY / BLACK  
BURGUNDY / BLACK  
DARK BROWN / BROWN

CONSTRUCTED OF 600D TWO TONE POLYESTER FULL SATIN LINING  
FRONT EVA POCKET  
PUSH BUTTON INTERNAL RETRACTABLE RECTANGULAR  
HANDLE SYSTEM



### GA99

SIZE: 21"26"30"

COLOR: BLACK / GREY  
BLACK / RED



...  
Built-In Back Pack  
Shoulder strap

CONSTRUCTED OF RUGGED.POLYESTER  
RECESSED METAL BALL BEARING IN-LINE SKATE WHEEL  
PUSH BUTTON LOCKING INTERNAL RETRACTABLE HANDLE SYSTEM  
MULTI FRONT ZIPPER POCKETS FOR YOUR CONVENIENCE  
BUILT-IN DUAL SHOE POCKETS AND EXTRA ZIPPER MESH POCKET  
EVA FOAMED FRONT PANEL  
FULL INTERIOR LINING



## DUFFEL BAG/FLIGHT BAG

CS022 CS026  
CS030 CS036

SIZE: 22"26"30"36"

COLOR: BK/WINE BK/PETROLEUM GREEN



U-TOP OPENING  
ADJUSTABLE & DETACHABLE SHOULDER STRAP  
TWO SIDE POCKETS  
PUSH BUTTON INTERNAL RETRACTABLE RECTANGULAR  
HANDLE SYSTEM  
IN-LINE JUMBO BALL BEARING WHEEL

CS023 CS027  
CS031 CS037

SIZE: 22"26"30"36"

COLOR: BLACK NAVY



U-TOP OPENING  
ADJUSTABLE & DETACHABLE SHOULDER STRAP  
FOUR LARGE POCKETS  
PUSH BUTTON INTERNAL RETRACTABLE RECTANGULAR  
HANDLE SYSTEM  
IN-LINE JUMBO BALL BEARING WHEEL

CS522 CS526  
CS530 CS536

SIZE: 22"26"30"36"

COLOR: BLACK NAVY KHAKI



U-TOP OPENING  
THREE LARGE POCKETS  
PUSH BUTTON INTERNAL RETRACTABLE RECTANGULAR  
HANDLE SYSTEM  
IN-LINE JUMBO BALL BEARING WHEEL

## DUFFEL BAG/FLIGHT BAG



### GA1038

SIZE: 36"

COLOR: BLACK BLUE

FRONT EVA POCKET  
EIGHT WHEELS  
EXPANDABLE BAG



### WB4030 WB4036 WB4040

SIZE: 30"36"40"

COLOR: BLACK NAVY

TWO LARGE FRONT POCKETS  
FIVE WHEELS SIX WHEELS FOR THE LARGEST ONE  
EXPANDABLE BAG



### WB5030 WB5036 WB5040

SIZE: 30"36"40"

COLOR: BLACK NAVY KHAKI

FIVE WHEELS SIX WHEELS FOR THE LARGEST ONE  
ONE FRONT POCKET  
TOP HANDLE FOR EASY CARRIAGE  
EXPANDABLE BAG

## DUFFEL BAG/FLIGHT BAG



### CS40030 CS40036 CS40042

SIZE: 30"36"42"

COLOR: BLACK

ADJUSTABLE & DETACHABLE SHOULDER STRAP  
TOP HANDLE FOR EASY CARRIAGE



### CS50030 CS50035

SIZE: 30"35"

COLOR: BLACK

ONE FRONT POCKET  
TOP HANDLE FOR EASY CARRIAGE



### CY02

SIZE: 18"X13"X6"

COLOR: BLACK

210D INTERIOR LINING  
USE AS BACKPACK/COMPUTER BAG  
AIRFLOW SYSTEM  
REFLECTIVE STARP



### CY03

SIZE: 18"X12.5"X7"

COLOR: BLACK

210D INTERIOR LINING  
USE AS BACKPACK/COMPUTER BAG  
AIRFLOW SYSTEM



### CY04

SIZE: 18"X12.5"X7"

COLOR: BLACK

210D INTERIOR LINING  
USE AS BACKPACK/COMPUTER BAG  
AIRFLOW SYSTEM

## DUFFEL BAG/FLIGHT BAG



### CY06

SIZE: 15.75"X11.25"X4"

COLOR: BLACK

420D INTERIOR LINING  
ADJUSTABLE & DETACHABLE SHOULDER STRAP  
TWO LARGE MAIN COMPARTMENTS

## DUFFEL BAG/FLIGHT BAG

### CS0619

SIZE: 18"X12"X7"

COLOR: BLACK RED NAVY

210D INTERIOR LINING  
USE AS BACKPACK/COMPUTER BAG  
AIRFLOW SYSTEM



### CY07

SIZE: 15.25"X12"X6"

COLOR: BLACK

210D INTERIOR LINING  
ADJUSTABLE & DETACHABLE SHOULDER STRAP  
TWO LARGE MAIN COMPARTMENTS

### CS0719

SIZE: 18.5"X13.5"X7.5"

COLOR: BLUE RED BLACK

210D INTERIOR LINING  
AIRFLOW SYSTEM  
REFLECTIVE STARP



### CY08

SIZE: 16"X11.75"X2.5"

COLOR: BLACK

210D INTERIOR LINING  
ADJUSTABLE & DETACHABLE SHOULDER STRAP  
TWO LARGE MAIN COMPARTMENTS



### CY09

SIZE: 16"X11.75"X2.5"

COLOR: BLACK

210D INTERIOR LINING  
ADJUSTABLE & DETACHABLE SHOULDER STRAP  
TWO LARGE MAIN COMPARTMENTS

## DUFFEL BAG/FLIGHT BAG



### CS0120 CS0124 CS0128

SIZE: 20"24"28"

COLOR:BLUE RED

U-TOP OPENING  
ADJUSTABLE & DETACHABLE SHOULDER STRAP  
TWO LARGE SIDE POCKETS  
TOP HANDLE FOR EASY CARRIAGE



### CS0220 CS0224 CS0228

SIZE: 20"24"28"

COLOR:BLACK

U-TOP OPENING  
ADJUSTABLE & DETACHABLE SHOULDER STRAP  
TWO LARGE SIDE POCKETS  
TOP HANDLE FOR EASY CARRIAGE



### CS0520 CS0524 CS0528

SIZE: 20"24"28"

COLOR:BLUE RED GREEN

U-TOP OPENING  
ADJUSTABLE & DETACHABLE SHOULDER STRAP  
TWO LARGE SIDE POCKETS  
TOP HANDLE FOR EASY CARRIAGE



### CS0820 CS0824 CS0828

SIZE: 20"24"28"

COLOR:BLACK NAVY GREEN BROWN

U-TOP OPENING  
ADJUSTABLE & DETACHABLE SHOULDER STRAP  
TWO LARGE SIDE POCKETS  
TOP HANDLE FOR EASY CARRIAGE

BLUE



BLACK



RED



RED INDICATOR SIGNALS WHEN LOCK HAS BEEN OPENED BY A TSA INSPECTOR  
SET YOUR OWN COMBINATION  
CONTEMPORARY SATIN NICKEL FINISH COMPLIMENTS UPSCALE TRAVEL BAGS  
1-3/16" (30MM) WIDE PADLOCK RECOGNIZED AND ACCEPTED BY TSA

